

Central Bohemia Tourist Board

MAJESTIC Accommodation



Central Bohemia Region

Preface

Dear Visitors of the Central Bohemia Region,

Allow me the pleasure of inviting you to twelve chateaux through which you'll be able to experience the timeless beauty of aristocratic living and gain inspiration for your own savoir vivre. Our careful selection includes the best chateau hotels in the region, where you will be welcomed onto unique premises aristocratic families of the day built both for themselves and future generations. It goes without saying that all selected hotels offer high-end gastronomy and a range of other services and activities for their guests, from golf, spas and hunting, to wine tasting and trips around the neighbourhood.

Each of the selected chateau hotels is one of a kind, deliberately distinct from the others. Some offer luxury and will transport you into the past, others focus on active leisure, and still others present a pleasing original fusion of the old and contemporary.

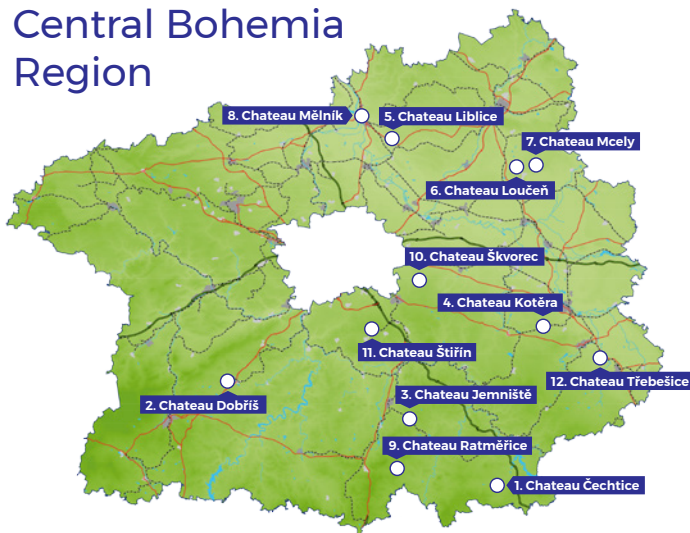
However, it is not all about lavish interior decorations and majestic buildings. The real value of each of these places lies not only in the building itself, but in everything around it: parks, paths, water elements, gardens, statues and other features of landscape and architecture. Harmoniously set in the environment, our chateaux were built with a deep understanding of the location.

Each of these hotels offers a chance to get in touch with a rich heritage and an opportunity to intersect your own travel experience with one that, in many cases, began centuries ago.

I wish you a pleasant stay in the Central Bohemia Region and a genuinely majestic experience.

Nora Dolanská,
Director of the Central Bohemia Tourist Board

Central Bohemia Region



Chateau Čechtice

www.zamekcechtice.cz

Phone: +420 774 000 570

GPS: 49°37'27.403"N 15°2'53.759"E

Chateau Mcery

www.chateaumcery.cz

Phone: +420 325 600 000

GPS: 50°17'58.14"N 15°4'38.43"E

Chateau Dobříš

www.zamekdobris.cz

Phone: +420 318 586 411, +420 722 710 488

GPS: 49°46'52.769"N 14°10'45.364"E

Chateau Mělník

www.lobkowicz-melnik.cz

Phone: +420 315 622 121

GPS: 50°21'3.004"N, 14°28'23.098"E

Chateau Jemniště

www.jemniste.cz

Phone: +420 603 819 651

GPS: 49°44'37.286"N 14°47'7.822"E

Chateau Ratměřice

www.zamek-ratmerice.cz

Phone: +420 312 600 100

GPS: 49°38'40.013"N 14°45'30.41"E

Chateau Kotěra

www.hotelkotera.cz

Phone: +420 321 613 111

GPS: 49°58'38.423"N 15°9'15.52"E

Chateau Savoia Škvorec

www.savoia.cz

Phone: +420 730 100 100

GPS: 50°2'45.541"N, 14°44'1.262"E

Chateau Liblice

www.zamek-liblice.cz

Phone: +420 315 632 111

GPS: 50°18'42.32"N 14°35'11.409"E

Chateau Štířín

www.stirin.cz

Phone: +420 255 736 111

GPS: 49°54'59.41"N 14°35'57.18"E

Chateau Loučeň

www.zamekloucen.cz

Phone: +420 325 585 228

GPS: 50°17'13.054"N 15°1'28.459"E

Chateau Třebešice

www.trebesice.com

Phone: +420 774 330 576

GPS: 49°55'46.888"N 15°20'25.861"E

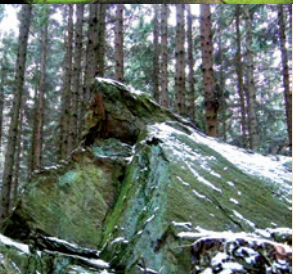


1. CHATEAU ČEHTICE

Located near the town of Vlašim, the Baroque Chateau Čechtice is a captivating spot, ideal for weekend stays, family holidays, private celebrations and reunions, weddings, or even gatherings of up to 200 guests. Your choice of stay ranges from 16 regular and 8 deluxe rooms.

Gastro

Chateau Čechtice will serve you predominantly classic Czech meals made with fresh ingredients, partly sourced from local suppliers. An all-inclusive buffet menu is also an option.



As is often the case with castles, Čechtice has its mystery too. A secret corridor is said to lead from the vault to **the Big Rock**. In fact there is a corridor from the vault, but its entrance has been bricked in.



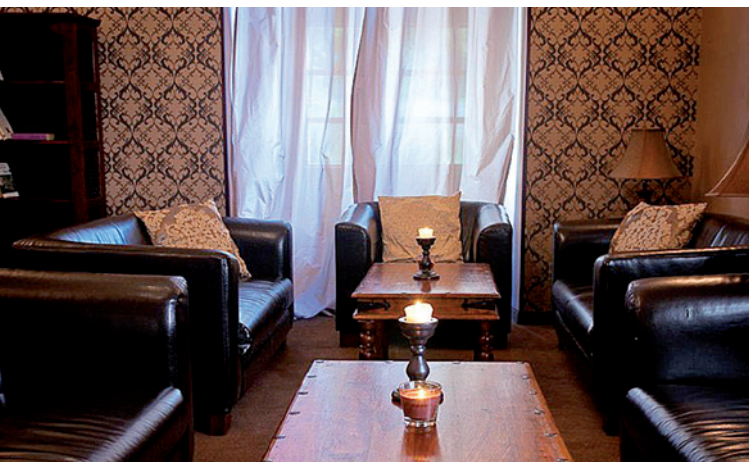
Other activities

- sauna, aroma baths, massages
- original escape game in the castle's cellar
- biking
- pétanque
- billiards, darts, table football
- virtual shooting range
- a stylishly decorated game room
- a unique escape game in total darkness



Chateau Story

After the original residence in Čechtice burnt to ashes in 1642, the Duke of Hollenweil had a new chateau built between 1656 and 1658. At the turn of the 18th century a new western wing was added. The wings facing the yard are decorated with arcades, while the roof of the central wing is adorned with a turret and a clock. Most of the local landowners, such as Jan Leopold Donát of Trautson and Falkenstein (from 1702) resided in the chateau. Karel Josef von Palm-Gundenfingen is recorded as the owner of the domain in 1766 and the noble family of the Auerspergs lived in the chateau after 1841, selling it to the local community in 1926. After that, the chateau housed a post-office and a school, which operated until 1996.



How to get there?

Motorway D1, exit 66 Čechtice, then follow road no. 150.

GPS: 49°37'27.403"N, 15°2'53.759"E



Contact:

Phone: +420 774 000 570 | www.zamekcechtice.cz



2. CHATEAU DOBŘÍŠ

Enjoy the aristocratic luxury of this impressive Rococo chateau. Built in 1745–1765, it is the property of the family of Colloredo-Mannsfeld. The hotel offers ten rooms and a wedding suite. Adjacent to Chateau Dobříš lies a gem of a Czech garden – a French park rich in floral ornaments, neatly cut hedges, an orangery, a fountain and a majestic sculpture called “The Horses of Helios Drinking.” The gardens extend to a landscape English park with the large Huťský Pond.



Gastro

The chateau restaurant serves high-quality Czech and international cuisine. There is also a cafe and a summer garden in the courtyard.



In 1905, Josef and Yvonne Colloredo-Mannsfeld released **the first specimens of muskrat** (*Ondatra zibethicus*), a water rodent originally from Northern America, into European wildlife. A memorial at the Huťský Pond refers to this event.



Other activities

- gym
- MTB rental
- walking trips in the area (the Brdy Highlands)
- hunting
- guided tour of the chateau



Chateau Story

The first chateau in Dobříš was built in the late 16th century in the style of the Renaissance. Bruno Mansfeld, the Highest Royal Huntsman, bought the chateau in 1630. Designed by architects Jules Robert de Cotte, the current Rococo building emerged after a rebuilding between 1745 and 1765 after a major fire. Interior decorations were designed by G. N. Servandoni. The family of Colloredo-Mansfeld was established with the marriage of Marie Isabela of Mansfeld to František Gundakar Colloredo in 1771. The family owned the Dobříš domain until 1942, when it was expropriated by the German Reich. After WWII, the chateau was used as a home for writers for almost half a century, after which it was returned to the Colloredo-Mansfeld family in 1988.



How to get there?

Motorway D4 from Prague, exit 27 Dobříš-sever.

GPS: 49°46'52.769"N, 14°10'45.364"E



Contact:

Phone: +420 318 586 411, +420 722 710 488 | www.zamekdobris.cz



3. CHATEAU JEMNIŠTĚ

The Baroque chateau Jemniště offers its guests three suites. Located in the left wing, the Rainer Suite consists of a romantic bedroom, a breakfast parlour and a bathroom. The suite features an aristocratic style of interior decoration and furniture, including a canopy bed, corner bathtub and fireplace. The window offers a pleasing view of the castle, the courtyard outfitted with a fountain and a well-maintained park. The remaining two suites, Terezie and František, are located in houses left of the main gate. Each has a charming parlour, bedroom, hall and bathroom. All suites are furnished with historical pieces, including lithographs and a painted washbowl.

Gastro

A la carte dinner is served to chateau guests. Café Custozza offers a selection of delicious desserts from high-quality ingredients. Guests can also buy local sausages and venison from the chateau's own hunting area.



The park is home to such animals as the South American coati, salmon-crested cockatoo, llama, donkey, Indian peafowl, Dutch miniature goat, red-neck wallaby and raccoon.



Other activities

- wellness (jacuzzi, pool, sauna)
- cosmetics and massages
- a guided tour of the chateau
- shopping the chateau hotel's own women's fashion line



Chateau Story

The chateau was built between 1720 and 1725, most likely according to the plans of František Maxmilián Kaňka. Leading Baroque artists such as Matyáš Bernard Braun and Václav Vavřinec Reiner were involved in creating the interior decoration. Sadly, the building burned to ashes in 1754, and only St. Joseph's chapel survived. František Adam Trauttmansdorff, the owner of the chateau at the time, had the chateau rebuilt and re-decorated, placing the Trauttmansdorff family's coat of arms on the front gable and adding statues by Lazar Widman. The present owners, the Sternberg family, have held the chateau since 1868.



How to get there?

Take motorway D1 from Prague, direction Brno, exit 21 Mirošovice. Then along E55, turn to road no. 112 in Benešov.

GPS: 49°44'41.173"N, 14°47'4.493"E



Contact:

Phone: +420 603 819 651 | www.jemniste.cz



HOTEL-RESTAURANT
CHATEAU KOTĚRA

4. CHATEAU KOTĚRA

Chateau Kotěra is an elegant boutique hotel in Ratboř near Kutná Hora, about one hour's drive from Prague. Located in a "new chateau" built by the famous Czech architect Jan Kotěra at the beginning of the 20th century, the hotel will charm all fans of excellent design, architecture and the good life. Guests can choose from 19 rooms located in the main building, equipped with period furniture, or from another 17 rooms located in the orangery.



Gastro

The restaurant focuses on Mediterranean cuisine, seafood and classic French meals. The regular menu is regularly extended by seasonal dishes. Guests can also order a degustation menu. Carefully selected wines from all over the world round off the offering.





Other activities

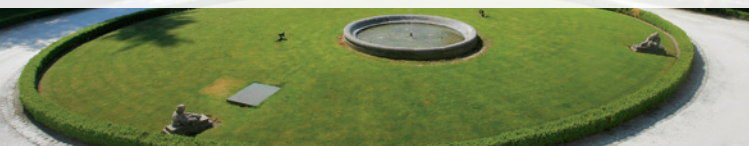
- massages
- guided tours of Kutná Hora
- wine and spirits tasting
- archery
- shooting with rifle or a shotgun
- tennis, pétanque, croquet



Chateau Story

The Neo-Classicist villa was built between 1911 and 1913 by Jan Kotěra as modern manor for the Mandelík's family. The family had a sugar refinery in Ratboř, a power station in Kolín and owned other assets as well. The chateau was a teeming center of bustling cultural and social life, and was even visited by Czechoslovakia's first president, T. G. Masaryk. Due to the Mandelík's family Jewish origin the chateau was expropriated in 1939 and served as a residence for the German asset management authority and SS troops, replaced by the Red Army for some time. Housing an elementary school from 1947, the chateau was returned to the Mandelík's family in 1992. Unfortunately, it continued to fall into disrepair until 2004 when it was salvaged and built into a hotel. Only a few items survived from the original furniture of the villa, including kitchen equipment, a serving table and built-in wardrobe. Chateau Kotěra features a unique collection of designer period furniture. Guests can admire furniture by Jan Kotěra, his student Josef Gočár and other major early 20th century architects and designers, such as Adolf Loos, Pavel Janák, Marcel Kramér, Otto Prutscher, Koloman Moser, Joseph Maria Olbrich, Dušan Jurkovič and Vlastislav Hofman.

Guests will perhaps notice two statues in Michelangelo-esque positions on the façade of the chateau, representing Matter and Spirit. They were created by Jan Šturska, one of the founders of modern Czech sculpture.



How to get there?

Follow road no. 2 from Prague to Kutná Hora, turn left after Bečváry to road no. 125; turn right in Kbilek.

GPS: 49°58'38.423"N, 15°9'15.520"E



Contact:

Phone: +420 321 613 111 | www.hotelkoterka.cz



5. CHATEAU HOTEL LIBLICE

Chateau Liblice is one of the most comprehensive and best-preserved specimens of Czech Baroque architecture. Offering 53 rooms with 110 beds in the chateau and an adjacent dependance room, the four-star chateau hotel combines history, comfort and contemporary architecture. To a large extent, the spirit of the place is determined not only by the building, but also its surroundings - in this case a French garden as well as English and game parks, including a unique boggy meadow with precious plant species.

Gastro

Led by chef Roman Rendl, the chateau restaurant serves Czech and international cuisine focusing on an extensive use of seasonal and local ingredients (deer from Hostín, trout from Byšice, beer from Lobeč). The selection of wine is in turn tied to the region - there are wines from Velké Žernoseky, the school farm Mělník and the Mělnické viniculture Kraus. The restaurant hall is one of the most beautiful parts of the Liblice castle, with an adjacent academic parlour and a lobby bar with a princess lobby and winter garden.



The chateau has its own collection of wine and coffee under the brand “Chateau Liblice.”



Other activities

- horse-riding
- wellness
- fishing in the chateau pond
- wine tasting in the cellar
- volleyball court
- badminton
- pétanque
- model yacht sailing
- mobile golf driving range
- bicycle and scooter rental



Chateau Story

When Arnošt Josef Pachta, the owner of the Liblice domain decided to build his new manor in Liblice near Mělník, he opted for Italian architect Giovanni Battista Alliprandi, who was widely acclaimed in Prague at the time. Construction took place between 1699 and 1706. The Pachta family sold the Liblice domain to Bedřich Deym of Střítež in the first half of the 19th century. In 1863, Vojtěch Deym sold the chateau and the land to Countess Antonia of Wallenstein, who extensively reconstructed the building in a Neo-Renaissance style. Antonia of Wallenstein bequeathed the property to her daughter Christiana, who later married into the Thun-Hohenstein family. This family held the Liblice domain until 1945, when the chateau was dispossessed in favour of the state. Now it belongs to the Academy of Sciences of the Czech Republic.



How to get there?

Motorway D8, exit 18 to Mělník. Take road no. 16, direction Mělník. In Mělník, take road no. 16, direction Mladá Boleslav.

GPS: 50°18'42.32"N, 14°35'11.409"E



Contact:

Phone: +420 315 632 111 | www.zamek-liblice.cz



6. CHATEAU LOUČEŇ

Guests staying at the Baroque chateau Loučeň are invited to relax and draw inspiration for the art of living well, which radiates from every corner of the chateau. Offering extremely picturesque accommodation, the three suits in the first floor are named after noble families that owned the chateau in the past: Wallenstein (Valdštejn), Fürstenberg and Thurn-Taxis. An alternative place to stay is the two-story Count Alexander's House near the chateau or a four-star Maximilan Lifestyle Resort hotel under the terrace of the chateau, combining history, comfort and modern architecture. The chateau's original interior decoration has remained largely extant, and the building itself is encircled by an extensive English park with a system of 11 labyrinths. This system is unparalleled across Europe.

Gastro

The cozy restaurant of the Maximilan Lifestyle Resort serves Czech and international dishes. From July till November, you can visit the Vtipná kaše ("Witty Porridge") restaurant, offering traditional Czech cuisine, including two specialties that can't be had anywhere else: Ftipná kaše and Čápy s mákem. From June 1st till September 30th, lunch can be enjoyed in the meadow in the pleasant shade of trees, some of which are more than a hundred years old.



A highlight among the exotic trees of the chateau park is the protected tulip tree, originally from North America. It is about 170 years old and has gorgeous deep-yellow blossoms at the turn of May and June.





Other activities

- a system of 11 labyrinths and mazes in the park
- chateau festival every first Saturday in a month
- wellness & spa in the Maxmilian Lifestyle Resort
- horse-draw carriage rides
- bike trips



Chateau Story

After a series of various owners from the lower land aristocrats, the original chateau was bought by Adam of Wallenstein, stepfather of the legendary general Albrecht of Wallenstein, in 1623. The current Baroque chateau was built between 1704 and 1713 by František Maxmilián Kaňka on the Count of Wallenstein Karel Arnošt's order. The Fürstenberg family took possession of the castle in 1752, after the death of Marie Anna, the last member of the Wallenstein family, who was married to Josef Arnošt of Fürstenberg. In 1809, the Thurn-Taxis family once again came to own the estate by marriage, this time via a union with a woman from the Fürstenberg family. In 1949, the chateau was taken over by the Ministry for Transportation as a holiday and training center for its employees. Between 1959 and 1968 the building served as a railway boarding school. Since 2000, the chateau and the park have been owned by Loučeň, a joint-stock company.



How to get there?

Motorway D10/E65 from Prague, 33 Luštěnice/Brodce.

GPS: 50°17'13.054"N, 15°1'28.459"E



Contact:

Phone: +420 325 585 228 | www.zamekloucen.cz



7. CHATEAU MCELY

About an hour's drive from Prague, located in an extensive English park at the outskirts of the mysterious St. George Forest, visitors will find Chateau Mcely, a hotel with 24 rooms in the former manor of the aristocratic Thurn-Taxis family.

The chateau is an ideal place for relaxation, romantic stays, and family celebrations and weddings. The design of the rooms features a different theme on each floor, making elaborate use of hydrangea motifs, ceramics and hand-made mural and floor paintings. The chateau boasts 111 square metres in total, topped off by the presidential suite Agape, located in the tower and offering a fascinating view of the Labe basin flatland.

Chateau Mcely champions sustainability, from sustainable heating and the bio-lake in the park to a mutually beneficial cooperation with local suppliers.



Gastro

Led by creative chef Jan Štěrbá, Piano Nobile is an elegant restaurant that has consistently ranked among the Czech Republic's top 10 restaurants. There is also a Piano Nobile bar in the garden patio.



There is a valuable specimen of Caucasian oak (*Quercus macranthera*) in the park.



Other activities

- Mcely Bouquet Spa
- massages and therapies using the chateau's own, purely natural Mcely Bouquet cosmetics
- natural bio-lake
- tennis and ball games on a multifunctional sports ground
- horse-drawn coach rides
- bike trips (bike rental at the chateau)
- Princess Nela's creative project for children



Chateau Story

The originally Baroque chateau was founded on the Vinice hill above Mcely, on the location of an ancient Celtic settlement during Octavian Ladislav from Wallenstein's domain in 1698. The building was later rebuilt in the style of Classicism with Neo-Renaissance elements. From 1869 till 1948, the chateau was owned by the noble family of Thurn-Taxis, welcoming celebrity visitors such as Mark Twain and Rainer Maria Rilke. From 1939, the chateau served as the family residence of Prince Luigi della Torre e Tasso and his wife Fanny Goodyear, a daughter of the famous tyre-manufacturing company founder. Since 2001, the chateau has been the property of Jim A. Cusuman and his Wife Inéz Cusuman, who carried out renovation and opened the present five-star hotel in 2006.



How to get there?

Follow road E65 from Prague, direction Mladá Boleslav, exit 33 Brodce.

GPS: 50°17'58.14"N 15°4'38.43"E



Contact:

Phone: +420 325 600 000 | www.chateaumcely.cz



8. CHATEAU MĚLNÍK

Over the confluence of the Labe and the Vltava rivers, on a hill grooved with vineyards, the remarkable Baroque chateau of Mělník can be found dominating the view. The chateau offers two suites for accommodation. A remarkable feature of Chateau Mělník are its old, three-storey cellars with an area of more than 1,500 square metres under the chateau. Dating back to the times of Emperor Charles IV, the cellars now serve as a charming venue for tasting sessions of the Lobkowitz wines.

Gastro

The chateau restaurant provides a beautiful view of the confluence of the Labe and the Vltava and the St. Ludmila vineyard. It serves typical Czech dishes made with Czech seasonal products and includes a wine bar with a terrace which offers tailored tasting of Chateau Mělník wines to its guests. There is also a patisserie with a rich offering of its own cakes, chocolate pralines, coffee and Lobkowitz wines.

The Ludmila has been named after Princess Ludmila, who set up the first vineyard in Mělník and gave rise to the whole local winemaking. Since 19th century, it has been bottled into typical **"inkwells"**.





Other activities

- tour of the chateau and collections of the Lobkowicz family
- tour of the wine cellars
- tasting of wine from the chateau vineyard
- trips around the neighbourhood



Chateau Story

A residence of the widows of Czech kings and princes in the early Middle Ages, the chateau later became a royal dowry castle, held by the wives of Czech rulers. The last residents of this kind were the wives of Jiří z Poděbrad. The stone Romanesque castle was rebuilt several times in a Gothic style. In the 16th century, it was converted into a Renaissance chateau, with subsequent Baroque modifications. In 1687, the chateau was purchased from Emperor Leopold I by Heřman Jakub Černín, who then added the southern wing. The last heiress of the domain from the Černín family, Marie Ludmila, married August Antonín Josef (Eusebius) Lobkowicz in 1753. From then on the Mělník branch of the Lobkowicz family owned the chateau until it was seized by the state in 1948. It was returned to the Lobkowicz family in 1992.



How to get there?

Take road E55 from Prague, exit 18, direction Mělník.

GPS: 50°21'3.004"N, 14°28'23.098"E



Contact:

Phone: +420 315 622 121 | www.lobkowicz-melnik.cz



9. CHATEAU RATMĚŘICE

Overlooked by the mythical Blaník Mountain, guests will be treated to a premium stay in one of 16 double rooms or 3 suites in the recently refurbished Classicist chateau Ramtěřice. The four-star hotel will enable guests to not only enjoy quiet relaxation, luxury and rural well being, but also sports and delicious meals. The extensive park in Ratměřice is particularly valuable due to its abundance of tree species.



Gastro

Gourmet experiences in the Sequoia restaurant are taken care of by Ondřej Soukup, a chef whose impressive track record includes work in a Michelin-star restaurant. The menu features Czech and international cuisine with a contemporary twist and local ingredients: the brook trout is from Tábor, cheese from Hrajovice and meat from Kondrac. When the weather allows it, visitors can sit outside on the terrace overlooking the lake and park. There is also a lounge for celebrations or business events.



With the height of over 42 metres, the two giant sequoias (*Sequoiadendron giganteum*) in the park are the tallest trees of its species in the country.



Other activities

- wellness & massages
- a unique outdoor bio-pool
- multifunctional sportsground
- hiking and bike trips
- golf (Čertovo břemeno)
- skiing (Monínek)
- wine cellar
- conference hall



Chateau Story

The original Baroque chateau was built in the early 18th century by Jan Antonín Kořenský of Terešov. After the Kořenskýs, owners of the chateau varied until 1751, when it was bought by the Sternthal family. An important milestone for Ratměřice was 1830, when Countess Henrietta Chotková of Chotkov and Vojnín came to the chateau. Otta Ferdinand Chotek (1816–1889) in particular devoted himself to the Ratměřice chateau, initiating its Classicist rebuilding and founding the English landscape feature. The Kabeš family, which owned the castle from 1926, also made significant contributions to the castle. Perhaps the most prominent member of the family was JUDr. Vladimír Kabeš, an industrialist and the founder of Aero, a well-known manufacturer of aircraft and later on, automobiles. After World War II the chateau was nationalized, and returned to the Kabeš family, but only after 1989. The current owner, Ing. Tomáš Novák, renovated and improved the chateau to its present-day excellent condition.



How to get there?

Take motorway D1 from Prague, exit 21 Mirošovice, then take road no. 3, direction Tábor. In Votice, turn to road no. 150, direction Jankov.

GPS: 49°38'40.013"N, 14°45'30.410"E



Contact:

Phone: +420 312 600 100 | www.zamek-ratmerice.cz



10. CHATEAU SAVOIA ŠKVOREC

The borough of Škvorec lies east of Prague, at a point where the hills are just starting to appear from amidst the otherwise flat land. In Škvorec, visitors will be welcomed by the Savoia chateau, a pleasant place with a rich and interesting history. Visitors can stay in one of 12 luxury double rooms. The cosy interior displays a tasteful combination of period furniture and contemporary design.



Gastro

Prepared by a team of chefs led by Monica Salvatore-Eremeev, the local meals reflect the current owner's varied mixture of traditions and cultures. A significant portion of the vegetables and herbs used in the kitchen are sourced from the chateau garden. The wine menu includes wines from the Mikulov wine subregion as well as sparkling wines, such as Valdobbiadene Prosecco, Cava, Champagne and others.



One wing was used by the numerous local Jewish community from mid 19th century. The chateau housed a synagogue with a higher Jewish school and a flat for the rabbi.



Other activities

- cooking courses
- wine & beer tasting
- guided tour of the chateau
- picnic in the garden
- private dining



Chateau Story

Castle Škvorec was established by Royal Chamberlain Domaslav. Nevertheless, only the well, and a part of the main wall with remnants of an early Gothic palace and bergfried (the main castle tower) have survived from that period. The chateau was formed during a Renaissance reconstruction of the castle by Zikmund Smiřický of Smiřice in the 1520s. Other important owners of the domain were the Olbramovics, the lords of Klinštejn and Albrecht of Wallenstein. The latter sold the chateau and the domain to the Liechtensteins in 1623. In 1639, the chateau was plundered and burned down by Swedish troops. However, it rose from its ruins once more thanks to Marie Terezie, Countess Savoia, born Liechtenstein. She spent almost half a century in the chateau and became famous for her charitable activities. Sadly, the death of the Countess in 1722 brought misfortune to the chateau: it fell into disrepair and was dismantled to a large degree. A school was later built on the place of the former Gothic palace in the late 19th century. The second saviours of the chateau are its current owners: Dmitrii Eremeev, a Russian aristocrat of the Nostic family, and his wife Monica Eremeev, born Salvatore, from an aristocratic family from Florence and Campoli in Northern Italy. The refurbishment of Chateau Savoia began in 2008.



How to get there?

From Prague, take road no. 12, direction Kolín, turn right in Úvaly to road no. 101.

GPS: 50°2'45.541"N, 14°44'1.262"E



Contact:

Phone: +420 730 100 100 | www.savoia.cz



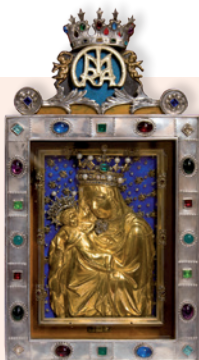
11. CHATEAU ŠTIŘÍN

Hidden in a quiet place amidst forests and ponds, Hotel Chateau Štiřín, a Baroque chateau with a beautiful English park, offers accommodation in stylish luxury rooms with a total of 123 beds. The rooms are situated in the historical building as well as in the adjacent houses: Salm, Arminia and Jockey. One of the chateau's main attractions is a golf course in the chateau park, offering a host of romantic spots in a cultivated natural environment.



Gastro

Gastronomy in Štiřín is taken care of by the restaurant in the Atis house, whose unique “organic” architecture resembles the work of the architect Hundertwasser. The menu is dominated by modern Czech cuisine. Guests will appreciate an outdoor garden with a splendid view of the park in summer and seats by the fireplace in winter.



A replica of the Madonna of Stará Boleslav – the Palladium of the Czech Lands – is kept in the wonderful chateau chapel.



Other activities

- golf course (9 holes, par 70)
- driving range
- golf indoor simulators
- wellness & fitness
- tennis court
- horse riding
- mountain bike rental



Chateau Story

The first historical record of Štířín dates back to 1395, referring to Chval (or Havel) or Štířín. At the time, a Gothic fortress most likely occupied the place. A number of luminaries stayed in Štířín overnight, including Petr Vok of Rosenberg and Emperor Maximilian on his way to Prague for coronation in 1562. The present-day three-wing chateau emerged from the Baroque reconstruction in 1750. The chateau was purchased by Count Rohan in 1822 and later, between 1831 and 1870 was held by the noble family of Nostitz-Rhieneck. An important milestone in Štířín's history is 1870, when the domain was purchased by industrialist František Ringhoffer II. For his merits in the development of economy, he was promoted to the estate of Free Lords with the hereditary title of baron. His descendants owned the chateau until 1945. Now it is the property of the Czech state.



How to get there?

Take motorway D1 from Prague, direction Brno, exit 15 – Velké Popovice.

GPS: 49°54'59.41"N 14°35'57.18"E



Contact:

Phone: +420 255 736 111 | www.stirin.cz



12. CHATEAU TŘEBEŠICE

In the vicinity of Kutná Hora, encircled with gardens and a section with a host of water elements, visitors will find the Renaissance rural Chateau Třebešice, offering an unforgettable experience. Each of the 6 suites is absolutely original and offers a different view and works of art created by Czech and international artists directly in the chateau. The interior is a combination of historical atmosphere, modern design and contemporary art.



Gastro

The chateau kitchen is available solely to the hotel guests. Due to the fact that the current owners of the castle are Italian, the menu is based on Italian cuisine. All meals are prepared from fresh ingredients that are sourced in large part from the chateau's own gardens and orchards.





Other activities

- trips to Kutná Hora, and Kačina and Žleby chataux
- gallery of contemporary art in the open air and in the Baroque granary
- guided tour of the chateau and collections
- library



Chateau Story

Mentions of the fortress “Trebesiz” go back to 1309, when it was owned by Konrád Kutner, a wealthy burgher of Kutná Hora. At the time, there was probably a Gothic water fortress in the location. During the tumultuous Hussite Wars, several individuals appear to have taken turns owning the fortress. In 1530, the fortress was acquired by Zikmund Materna of Květnice, and was rebuilt radically, becoming a chateau encircled by a water moat. In 1718, Josef Jaroslav Věžník rebuilt the chateau in a late Baroque style. In 1764, the Třebešice chateau and Nové Dvory was bought by Count Jan Karel of the Chotek family, who then owned it for several generations. Most of the extant buildings of the estate date back to the middle 19th century: the old stables with low brick vaults and barns, as well as the “Great Barn,” considered to be one of the largest and most beautiful buildings of its kind in Bohemia. Quido Thun-Hohenstein inherited Třebešice in 1911. However, Quido squandered the family property by gambling and was forced to flee to Rome to escape creditors. Consequently, the state put his property out to auction. In 1924, the chateau and estate of Třebešice was purchased by the agronomist Dr. Vojtěch Vraný, converting the estate into a model farm and renovating the chateau. After 1948, the whole estate was nationalized and left to decay. In 2000, it was bought by two Italians – architect Alberto Di Stefano and artist Eugenio Percossi – who started to refurbish and rebuild the place into a centre for contemporary art.



The south corner tower is home to “Memento mori” (2004–2005), an installation by Jeph Gurecka. It is a contemporary ossuary, inspired by the famous Baroque ossuary in the nearby town of Sedlec. The ossuary in Třebešice however features a twist, with the hundreds of skulls making up the structure having been fashioned from bread.



How to get there?

Take road no. 38 from Kutná Hora to Čáslav, turn right in Církvice just after you pass the pond.

GPS: 49°55'46.569"N, 15°20'19.737"E



Contact:

Phone: +420 774 330 576 | www.trebesice.com



Central Bohemia Tourist Board

Husova 156/21
Praha 1 – Staré Město

T: +420 220 190 411
E: info@sccr.cz

www.centralbohemia.eu



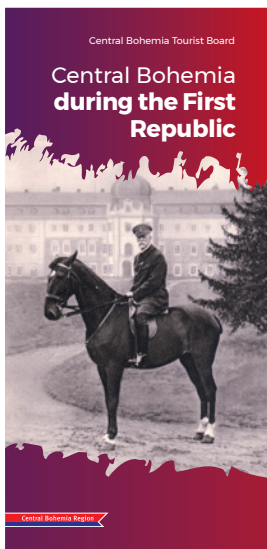
fb.com/centralbohemia



@visitcentralbohemia

Published by © Central Bohemia Tourist Board
in cooperation with TTG Czech
Praha 2017 – 1st edition. Not for sale.

Other publications:



Central Bohemia during
the First Republic